



## VILLA SEMI-FLUSH CEILING LIGHTS INSTALLATION INSTRUCTIONS

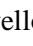

These instructions are provided for your safety.

Please read carefully before commencing work and retain for future reference.

### SAFETY INFORMATION

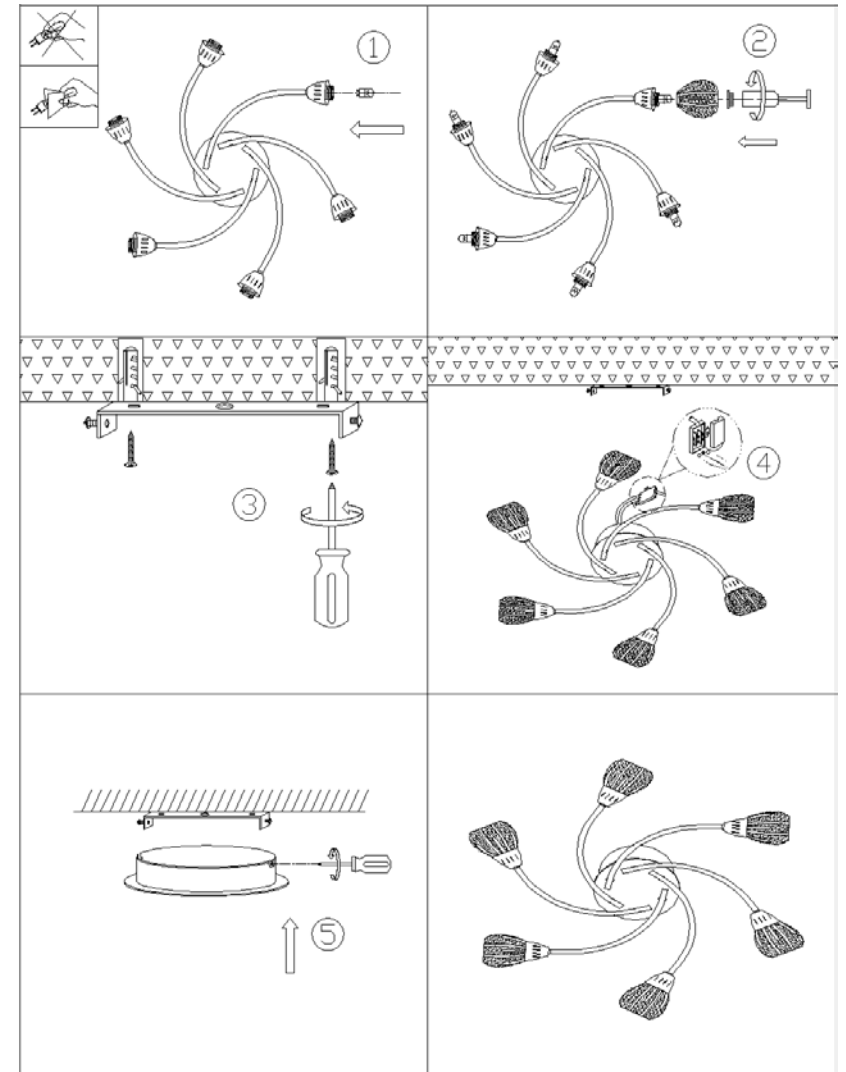
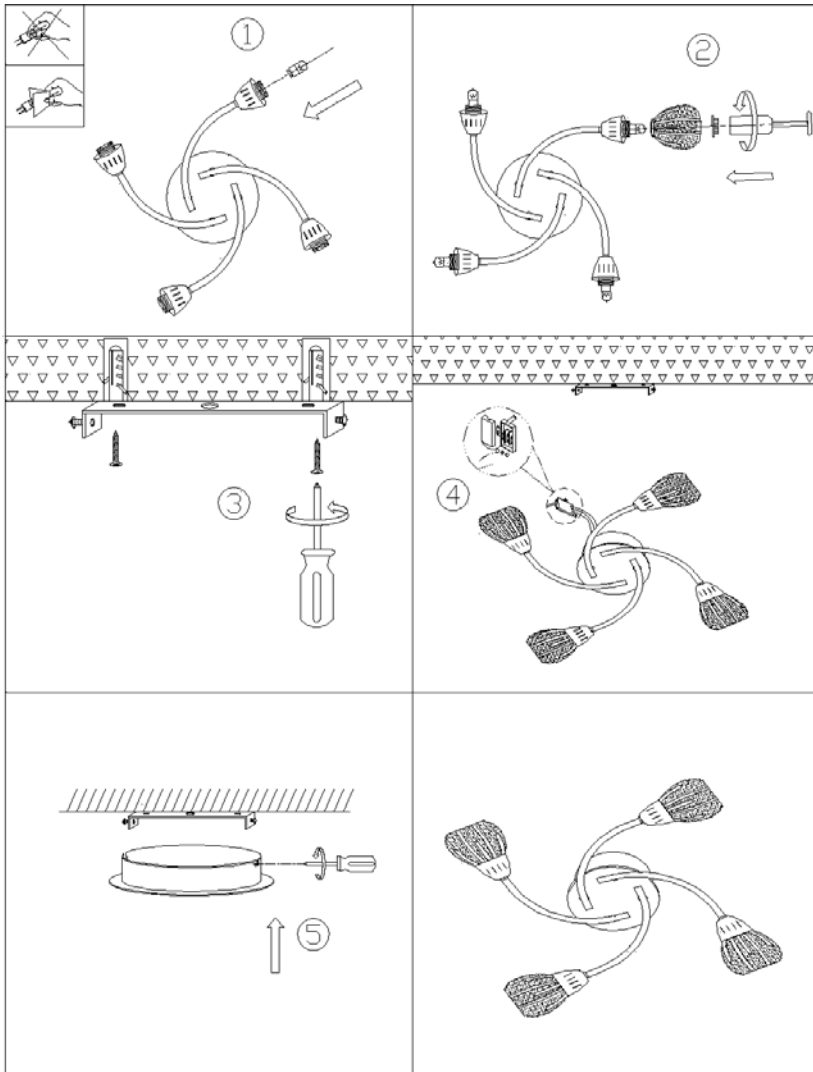
- \* If you are in any doubt consult a person competent to give advice on the installation of electrical equipment.
- \* This fitting should be fitted in accordance with IEE Wiring Regulations and the Building Regulations
- \* To prevent electrocution switch off at the mains supply before installing or maintaining this fitting. Ensure other persons cannot restore the electricity supply without your knowledge.
- \* To avoid damage to concealed wiring during installation, establish the direction of the supply cable before drilling fixing holes.
- \* This fitting is Class 1 =  and should be fitted to a lighting supply (with earth) protected by a 5 amp fuse or equivalent circuit breaker.
- \* Always be sure to use the correct type and wattage of bulbs as indicated on the fitting. Never exceed the wattage stated.
- \* When changing the bulb, always switch off at the mains and allow the old bulb to cool down before handling. Dispose of used bulbs carefully.
- \* This fitting is designed for use with self-shielded tungsten halogen lamps only = 

### INSTALLATION

1. Ensure the house electricity supply is off at the fuse board.
2. If you are fitting this product in place of an existing one, you may find that there are more than 3 sets of cables connected. If there are loop in cables that are not connected to the light these must be terminated in a separate terminal block not connected to the fitting. Before removing existing fitting, carefully note position of each set of cables.
3. Remove mounting bracket from fitting by undoing screws at the sides of fitting cup and retain screws for later. Using the mounting bracket as a template, mark and then drill fixing centres.
4. Attach mounting bracket appropriately to the wall using suitable fixings. Ensure screws are firmly fixed into a solid wall, or other suitable mounting and not just the plaster.
5. The weight of this fitting must be supported whilst you make electrical connections. Lever open the connector block cover with a screwdriver then make the electrical connections as follows, **you may require assistance**.  
Connect the supply live (normally brown or red) to fitting live (marked "L") on the terminal block.  
Connect the supply neutral (normally blue or black) to fitting neutral (marked "N") on the terminal block.  
Connect the supply earth (normally green/yellow or unsheathed) to earth (marked "") on terminal block.  
Ensure electrical connections are tight and no loose strands of wire protrude from the terminal block then close connector block cover by snapping back together
6. Offer fitting to mounting bracket and align fixing holes, use screws removed earlier to secure fitting to mounting bracket. **Take care not to damage wiring.**
7. Fit decorative glass, remove shade ring on lamp holder and fit into shade ring tool supplied. Fit glass and secure in place using shade ring tool provided.
8. Fit the bulb, type and wattage as indicated on the fitting. **The wattage indicated must not be exceeded.** Use only self shielded bulbs.  Do not touch halogen bulbs with bare hands as this will shorten their life.
9. Switch on the electricity supply at the fuse board.

### GENERAL INFORMATION

This fitting is designed for internal use only and must be fitted to a DRY SURFACE as any dampness in plaster or paint can damage the finish. **Do not use polish or abrasive cleaner - just a soft dry cloth.**



**This diagram is offered as a guide only. Please follow all the safety and installation information overleaf.**