

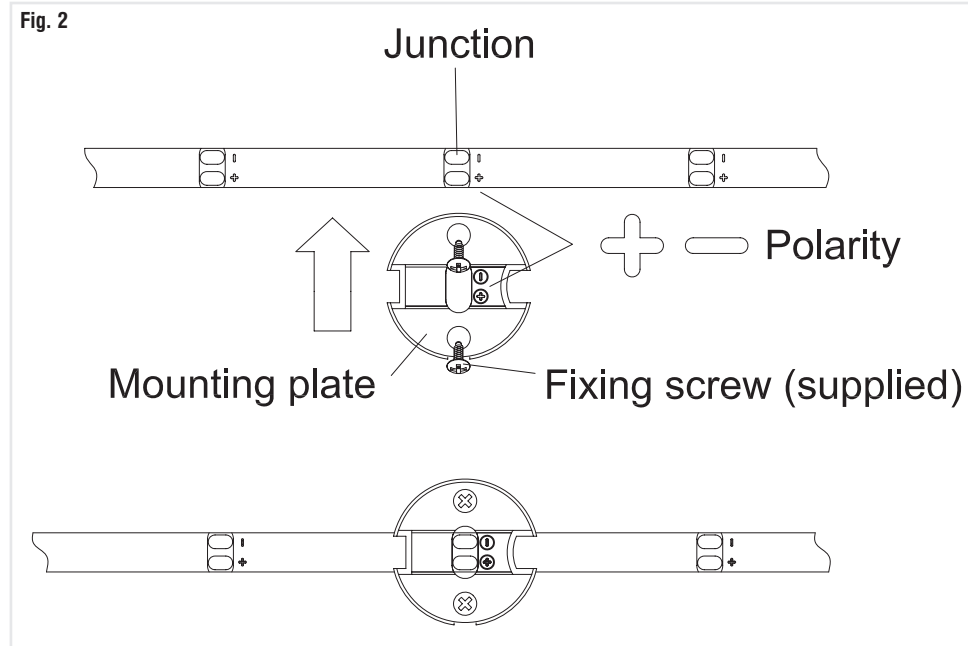
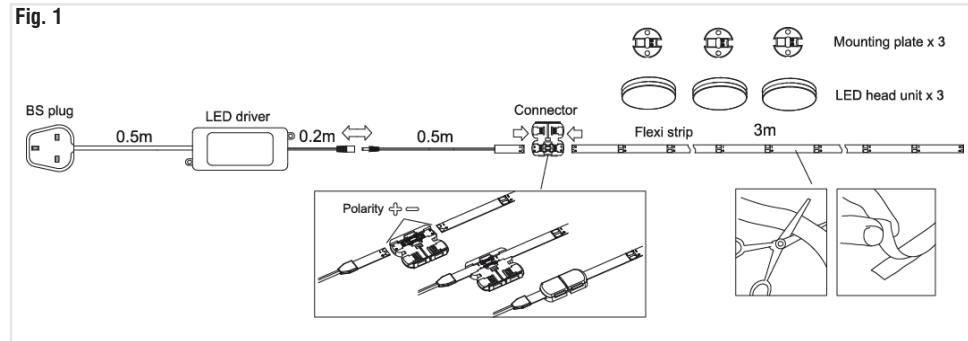
Recycling advice



Waste electrical products should not be disposed of with household waste. Please recycle where facilities exist. Check with your Local Authority or retailer for recycling advice.

Safety information

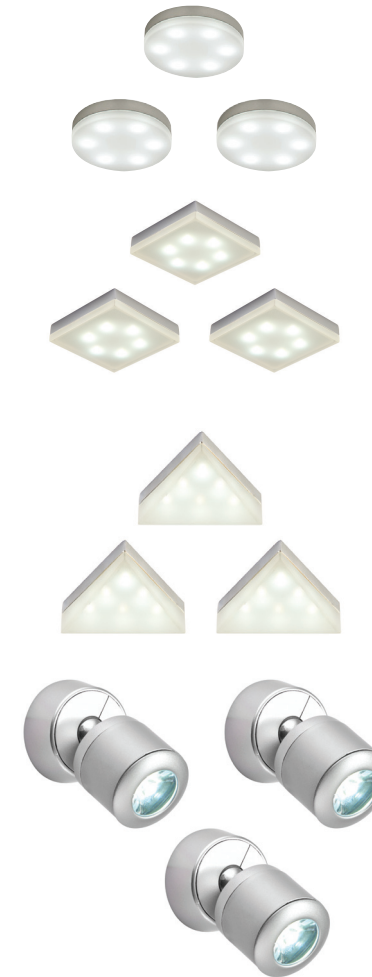
For your safety, always switch off the supply before maintaining or cleaning.



Instruction leaflet

Marci Undercabinet Kit

60531, 67672, 67673, 69995



saxby
lighting

Thank you for purchasing this light fitting. Please read the instructions carefully before use to ensure safe and satisfactory operation of this product. Please retain these instructions for future reference.

Warning

The power supply is Double Insulated and does not require connection to an Earth circuit.

The LED units are Safety Extra Low Voltage and must not be earthed.

Please read these instructions carefully before commencing any work.

This unit must be fitted by a competent and qualified electrician.

Install in accordance with IEE Wiring regulations and current Building Regulations.

Always disconnect the LED driver from the mains when installing or maintaining this system.

This product contains non-replacable parts and cannot be serviced. If damage occurs the part should be scrapped.

Waste electrical products should not be disposed of with household waste. Please recycle where facilities exist. Check with your local authority or retailer for recycling advice.

Specification & Kit Contents

Dimensions	:	L: 3000mm Dia: 55mm Proj: 13mm (60531)
		L: 3000mm 55 x 55mm x Proj: 12.4mm (67672)
		L: 3000mm 70 x 60mm x Proj: 20mm (67673)
		L: 3000mm Dia: 38mm Proj: 58mm (69995)
Voltage	:	220-240V
Wattage	:	3 x 1.5W LED module (SMD 2835) Cool White - 330lm
		3 x 1W LED Hi Power - 360lm (69995)

This kit contains: 3 x 1W LED Fittings (69995)

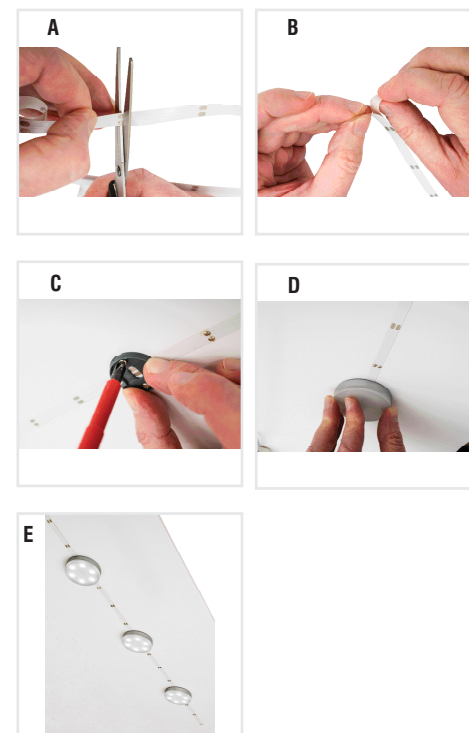
- 3 x 1.5W LED Fittings (60531/67672/67673)
- 1 x 15W Inline LED Driver with UK Mains Plug
- 1 x 3m Adhesive Strip PCB
- 6 x Fixing Screws
- 3 x Mounting Disc
- 1 x Strip Connector

Layout

- This kit includes an adhesive flexi strip PCB which can be stuck to most surfaces.
- Plan the desired layout of this fitting carefully, ensuring the cables will reach the distance between the power supply and the flexi strip
- Avoid locating any cables in positions that would cause a hazard. Position cables and flexi strip away from areas where they may be at risk from being cut, trapped or damaged.
- Cables in walls must be protected using suitable conduit or plastic trunking.
- This product no has special protection against the ingress of moisture.
- This kit is compatible with these additional switches (sold separately):-
 - 61657: Touch dimmer
 - 61658: IR Switch
 - 61659: PIR Sensor
 - 61660: Push Switch

Basic Installation

- Position the mains plug next to the mains outlet socket that the system will connect to. Do not plug-in at this stage.
- After deciding the layout of the kit, ensure the cable is long enough to connect to the desired position. See Fig. 1 overleaf.
- Cut the adhesive flexi strip to the desired length. Ensure that the cut is made at the copper connection points (A).
- Peel the backing tape off the adhesive flexi strip. Apply moderate pressure to stick the strip the surface. An assistant may be required to help stick a longer length accurately (B).
- Secure mount discs over the contacts - situated at 5cm intervals (C). See Fig. 2 overleaf.
- Click the fittings into place (D)
- Add a switch (if desired) to this kit.
- Connect the adhesive flexi strip, link cable and LED driver together, ensuring the correct polarity is observed - See Fig. 1 overleaf. Connect the power supply to the mains and turn on (E).
- Please note the images shown are for illustration purposes only. The shape of the product supplied may differ from the images shown.



Wiring

This unit is double insulated and must not be earthed.

- The appliance is fitted to a rewirable 3 pin plug fitted with a 3 amp fuse. Should the fuse require replacement, it must be replaced with a fuse rated at 3 amp and approved to BS1362.
- Either directly wire the power lead to a fused outlet socket. The Brown wire must be connected to the terminal marked L or coloured red. The Blue wire must be connected to the terminal marked N or coloured black. Use a 3 Amp Fuse approved to BS1362.
- If the mains plug is unsuitable for the socket outlet or is removed for any other reason, then the cut off plug should be disposed of safely to prevent the hazard of electric shock.

- There is a danger of electric shock if the cut off plug is inserted into any 13 amp socket outlet.
- The wires in the mains lead on this appliance are coloured in accordance with the following code:
 - Blue – Neutral
 - Brown – Live
- Use a 3 Amp Fuse approved to BS1362.

